

# JUMO variTRON 300 inkl. Funktechnologie

**Referenten:**  
Michael Wiener (M. Eng.)







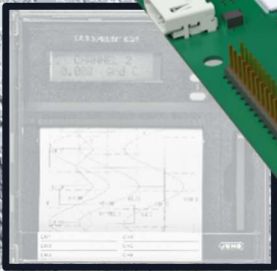
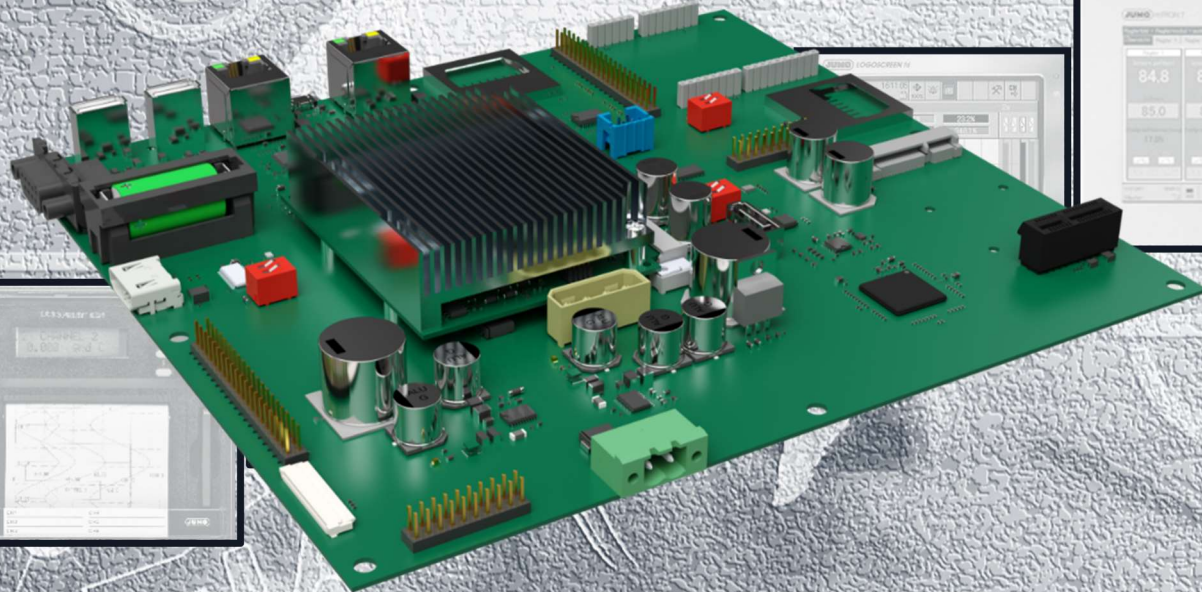
# JUMO





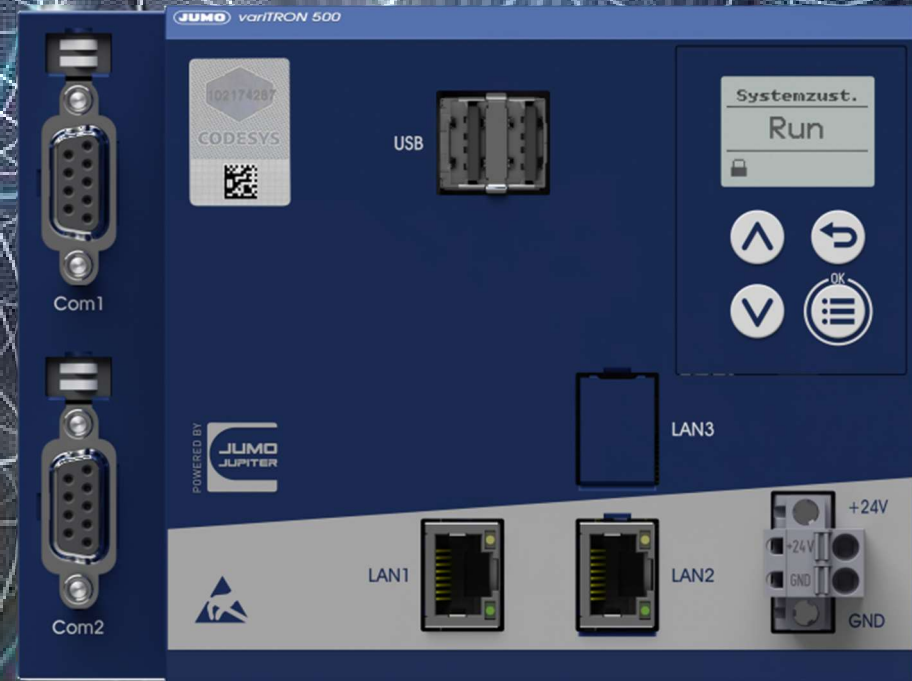
# JUMO

## JUMO JUPITER Plattform





## JUMO variTRON 500









2021

JUMO variTRON 300





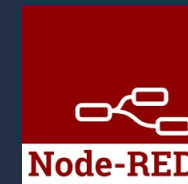
# 1. Produktvorstellung





# 1. JUMO variTRON 300 - Fakten

- ✓ Hardware - Zentraleinheit
  - ✓ CPU:1x800MHz
  - ✓ Anbindung von bis zu 8 I/O-Modulen
- ✓ CODESYS V3.5 Programmierumgebung SP16, Node-RED
  - ✓ Visualisierung
  - ✓ Feldbussysteme
- ✓ Display und Folientastatur
- ✓ 1x USB-Host
- ✓ 2x Ethernet
- ✓ 1x RS 485
- ✓ Wtrans-Gateway
  - ✓ Anbindung von bis zu 32 Sensoren



CODESYS





# 1. JUMO variTRON 300 – Wtrans-Anbindung

✓ Wtrans p

✓ Wtrans B

✓ Wtrans T

✓ Wtrans E01





# 1. Produktvorstellung - JUMO variTRON 300

## Vielfältige Funktionen



### variTRON 300

- ✓ Viele Funktionen
- ✓ CODESYS inkl. Visu
- ✓ Node-RED
- ✓ I/O-Module, Wtrans
- ✓ Cloudanbindung
- ✓ Datenaufzeichnung
- ✓ ...

### Schweizer Messer

- ✓ Viele Funktionen
- ✓ Messer
- ✓ Säge
- ✓ Schere
- ✓ Zange
- ✓ Feile
- ✓ ...

All in One ✓

All together (✓)

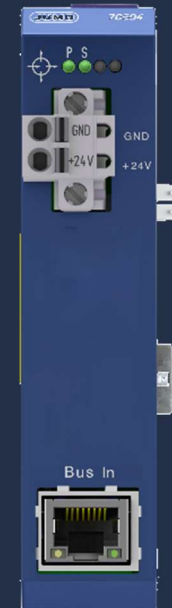
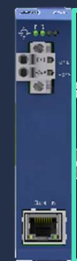
Alle Funktionen parallel benutzen?

→ JUMO variTRON 500

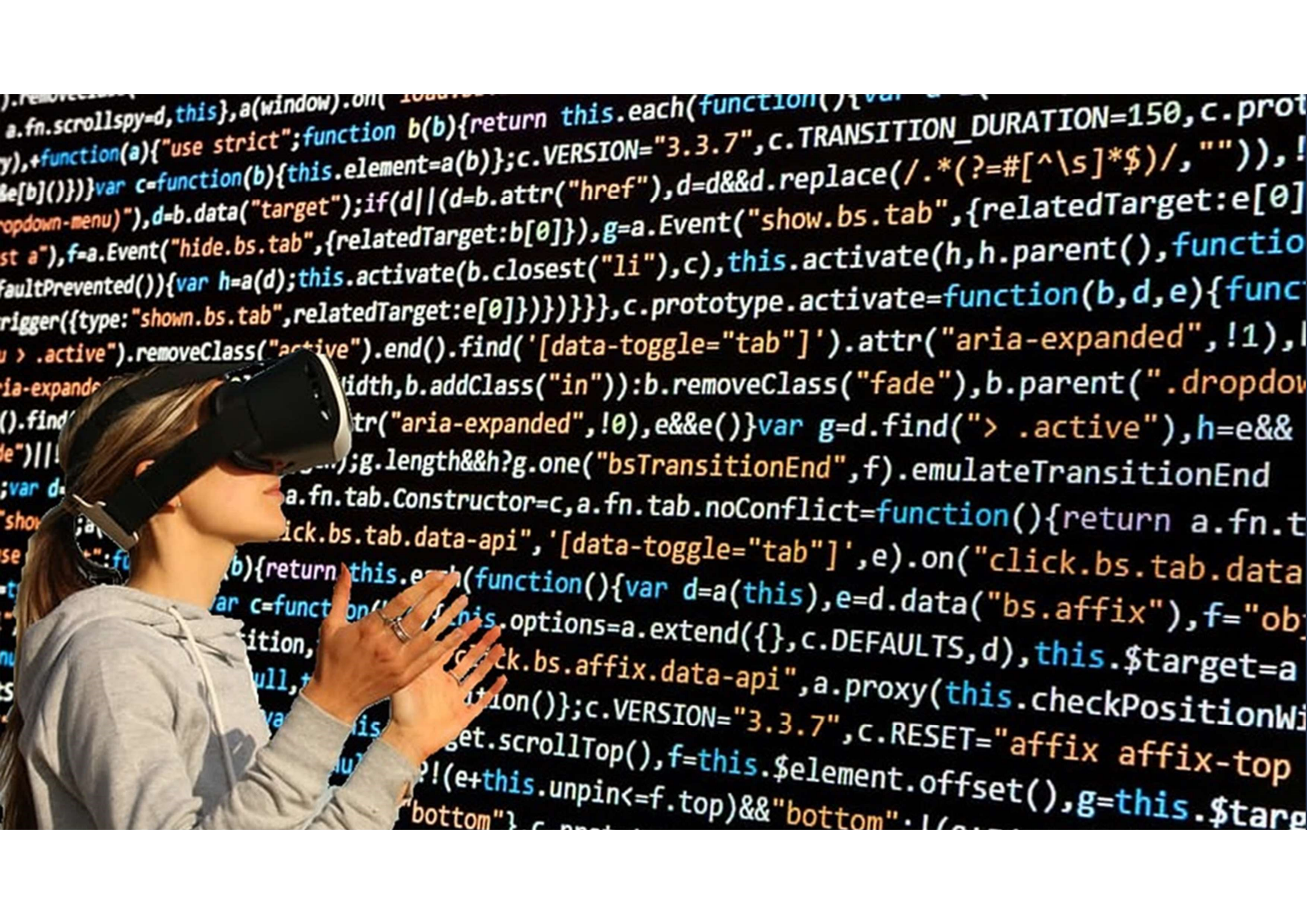
# 1. Produktvorstellung – JUMO Routermodul 1-Port

## Routermodul 1-Port (705043)

✓ Integration I/O-Module

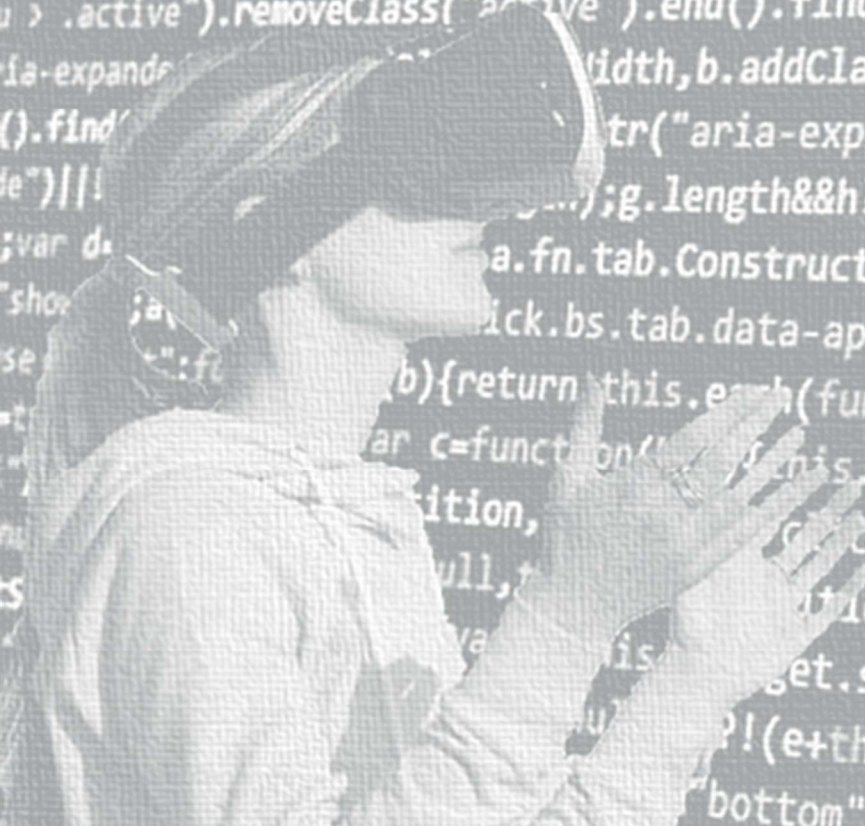






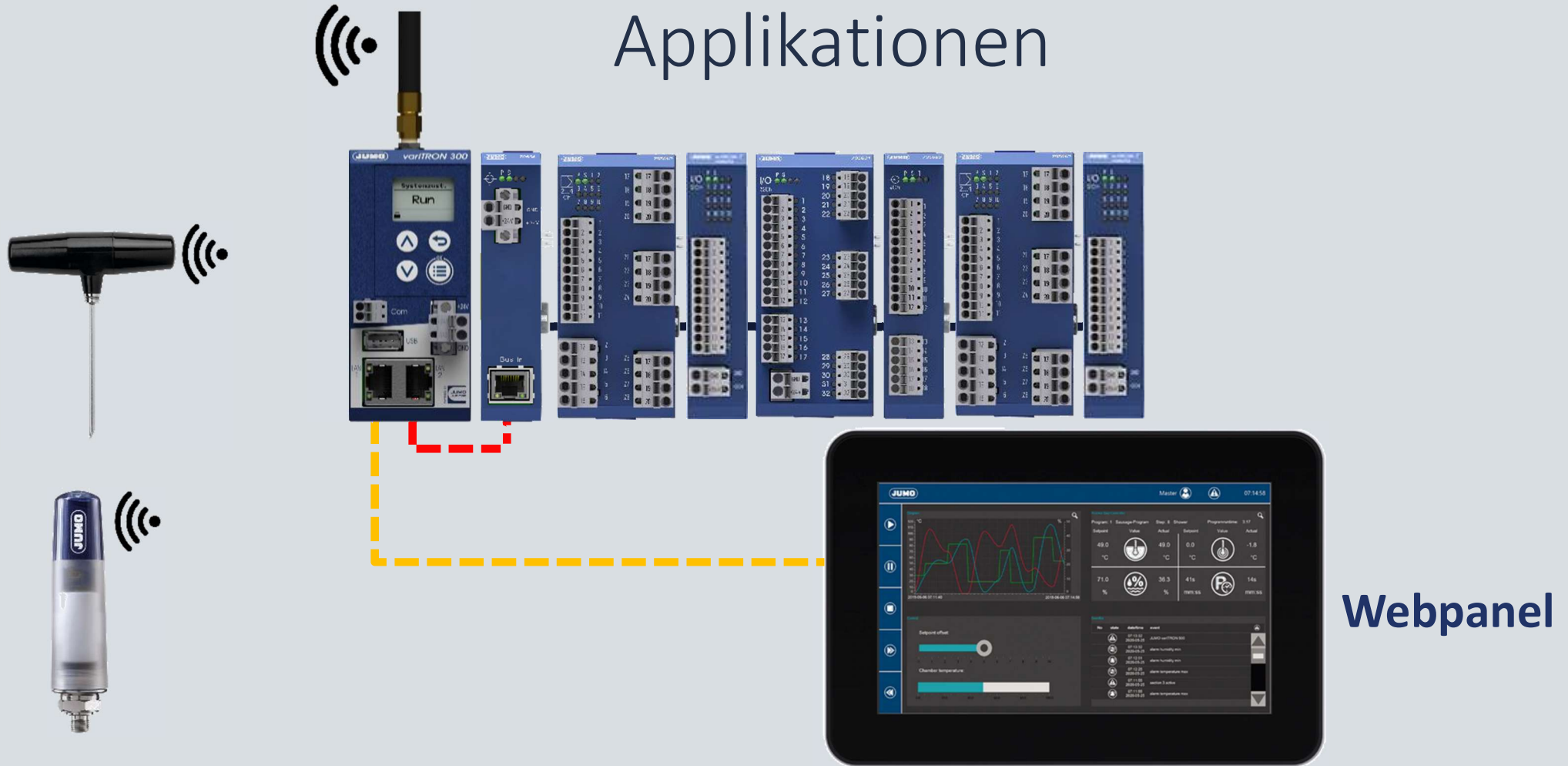


## 2. Anwendungen JUMO variTRON 300



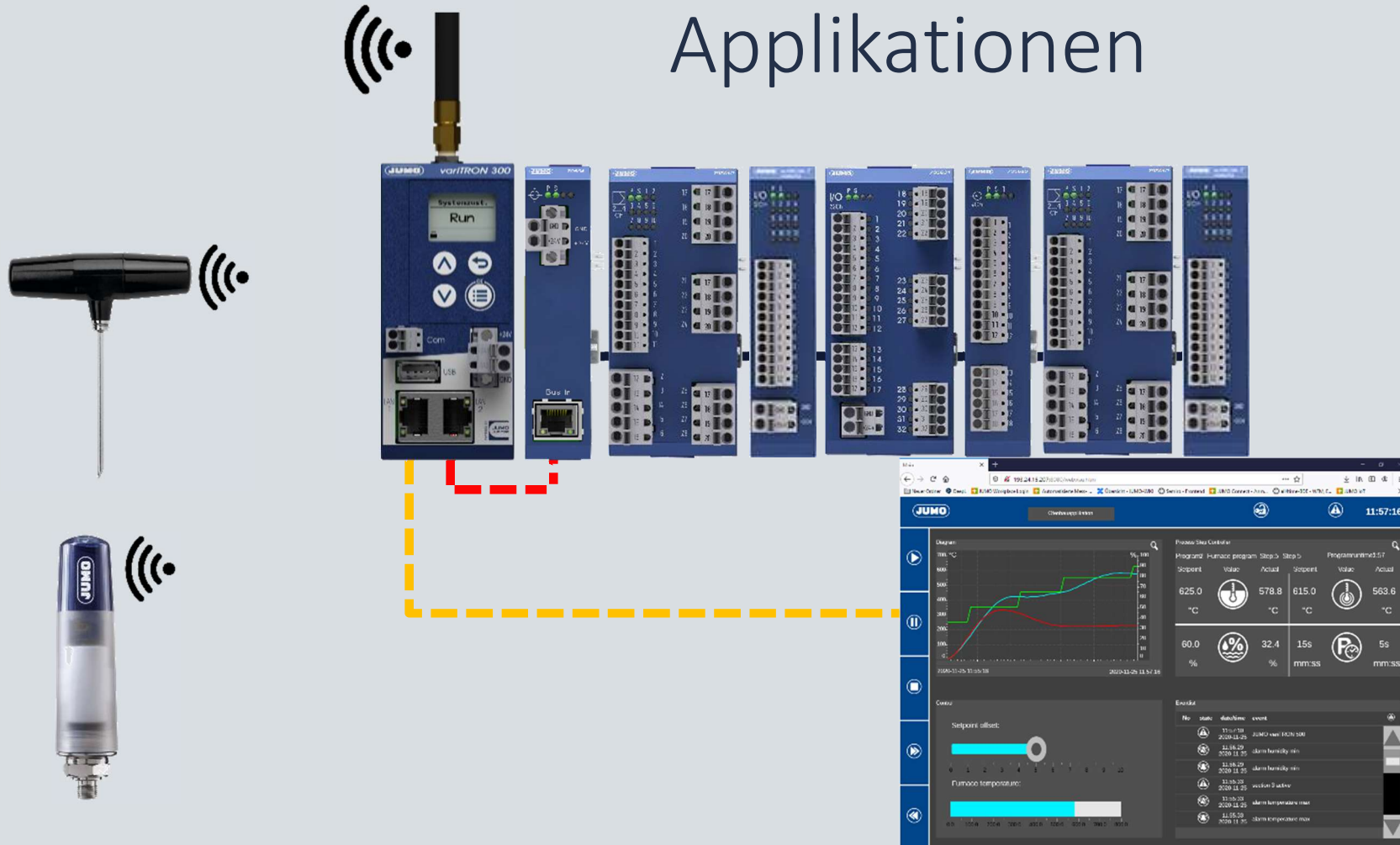


# 3. JUMO Systemlösungen – Wtrans- Applikationen



Webpanel

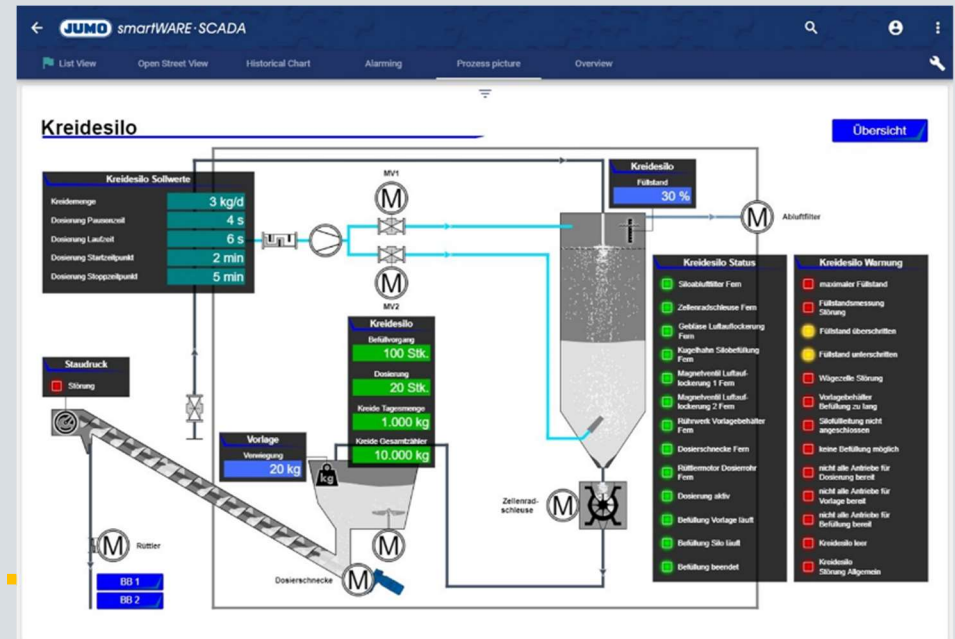
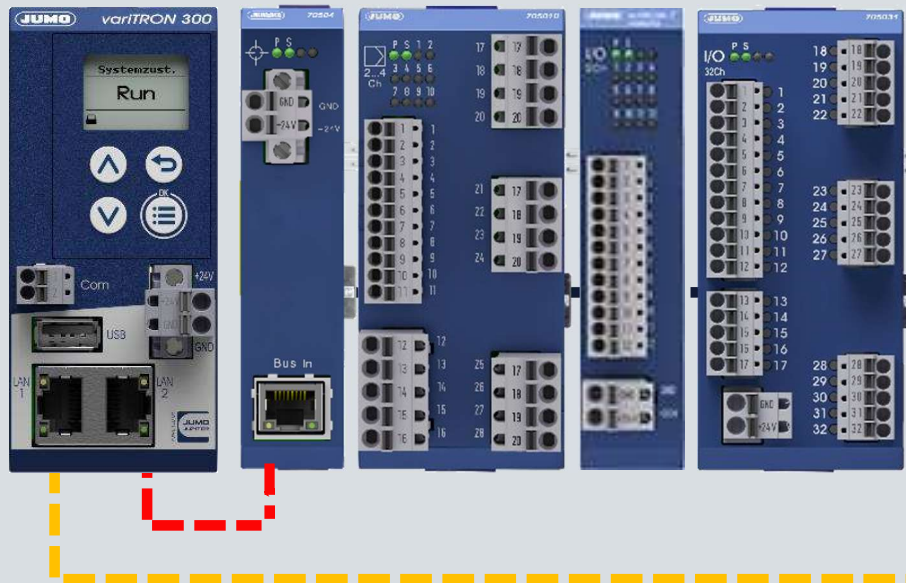
# 3. JUMO Systemlösungen – Wtrans- Applikationen



Webbrowser

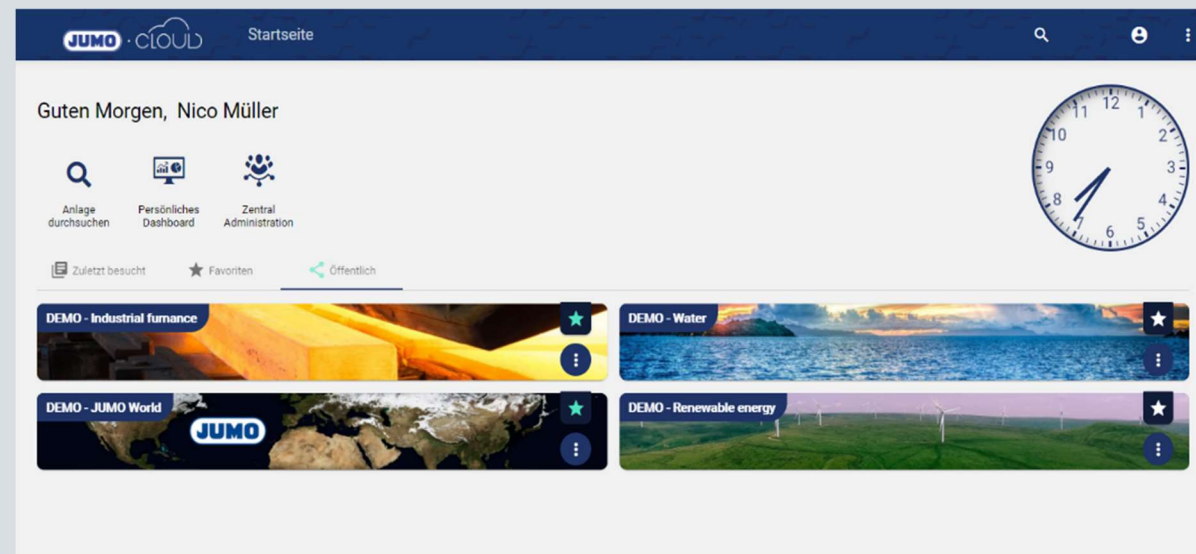


# 3. JUMO Systemlösungen – Anbindung JUMO smartWARE SCADA



# 3. JUMO Systemlösungen – Anbindung JUMO Cloud

**JUMO** Web Cockpit









### 3. JUMO variTRON-Familie

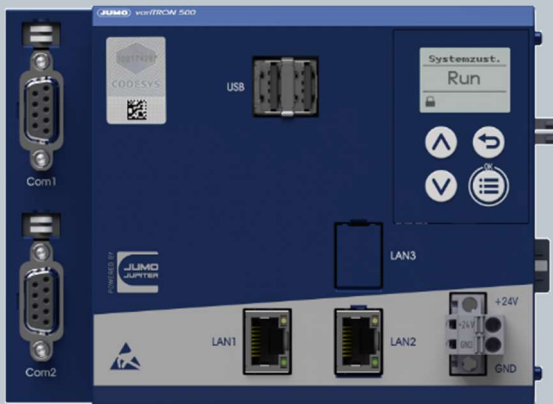




### 3. JUMO variTRON-Familie

JUMO variTRON 300

JUMO variTRON 500



Die Familie wächst









Welche Fragen darf ich Ihnen  
beantworten?